

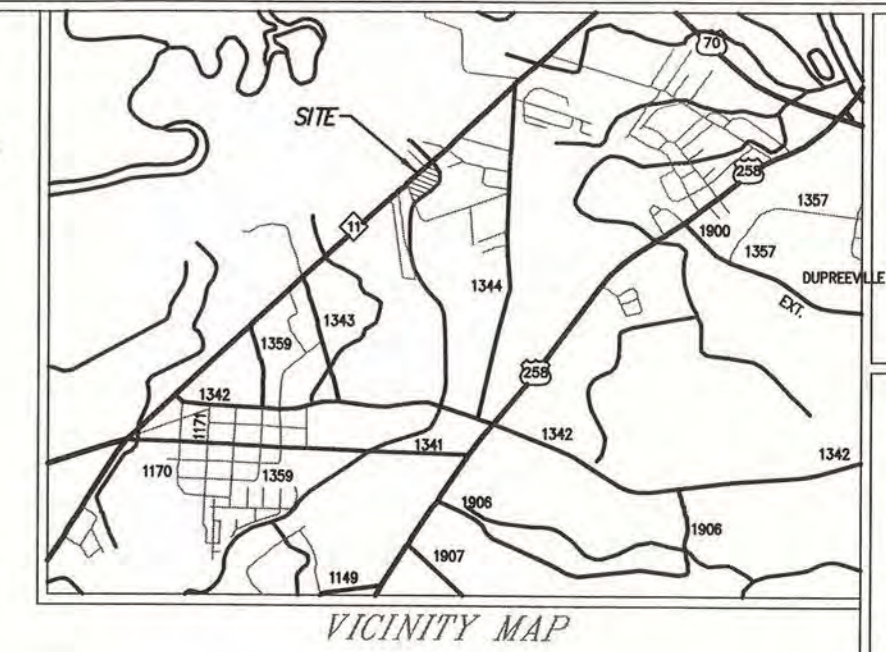
COMBINED SCALE FACTOR = 0.9998765
 ALL DISTANCES ARE HORIZONTAL
 GROUND MEASUREMENTS IN FEET
 AND DECIMALS THEREOF UNLESS
 OTHERWISE NOTED.

WILLIAM C. BUTLER, JR. CERTIFY THAT THIS
 PLAT WAS DRAWN UNDER MY SUPERVISION FROM AN ACTUAL
 GPS SURVEY MADE UNDER MY SUPERVISION AND THE FOLLOWING
 INFORMATION WAS USED TO PERFORM THE SURVEY:

- (1) CLASS OF SURVEY: A
- (2) POSITIONAL ACCURACY: 0.10 FT.
- (3) TYPE OF GPS FIELD PROCEDURE: NCVRS NETWORK RTK
- (4) DATES OF SURVEY: 7-21-17
- (5) DATUM / EPOCH: NAD 83 / 2011
- (6) PUBLISHED / FIELD CONTROL: NCVRS NETWORK
- (7) GEOD. MODEL: CONTINENTAL US NGS2011B
- (8) COMBINED GRID FACTOR(S): 0.9998765
- (9) UNITS: US SURVEY FEET

L - 4359
 THIS 21ST DAY OF JULY, 2017.

THIS PROPERTY IS LOCATED IN ZONE AE AND IS
 IN A SPECIAL FLOOD HAZARD AREA AS DETERMINED BY
 SCALING AND GRAPHIC PLOTTING FROM N.F.L.P. RATE MAPS
 DATED 4-16-13 COMMUNITY PANEL 370144-4504-K



SHEET NO.

S-1

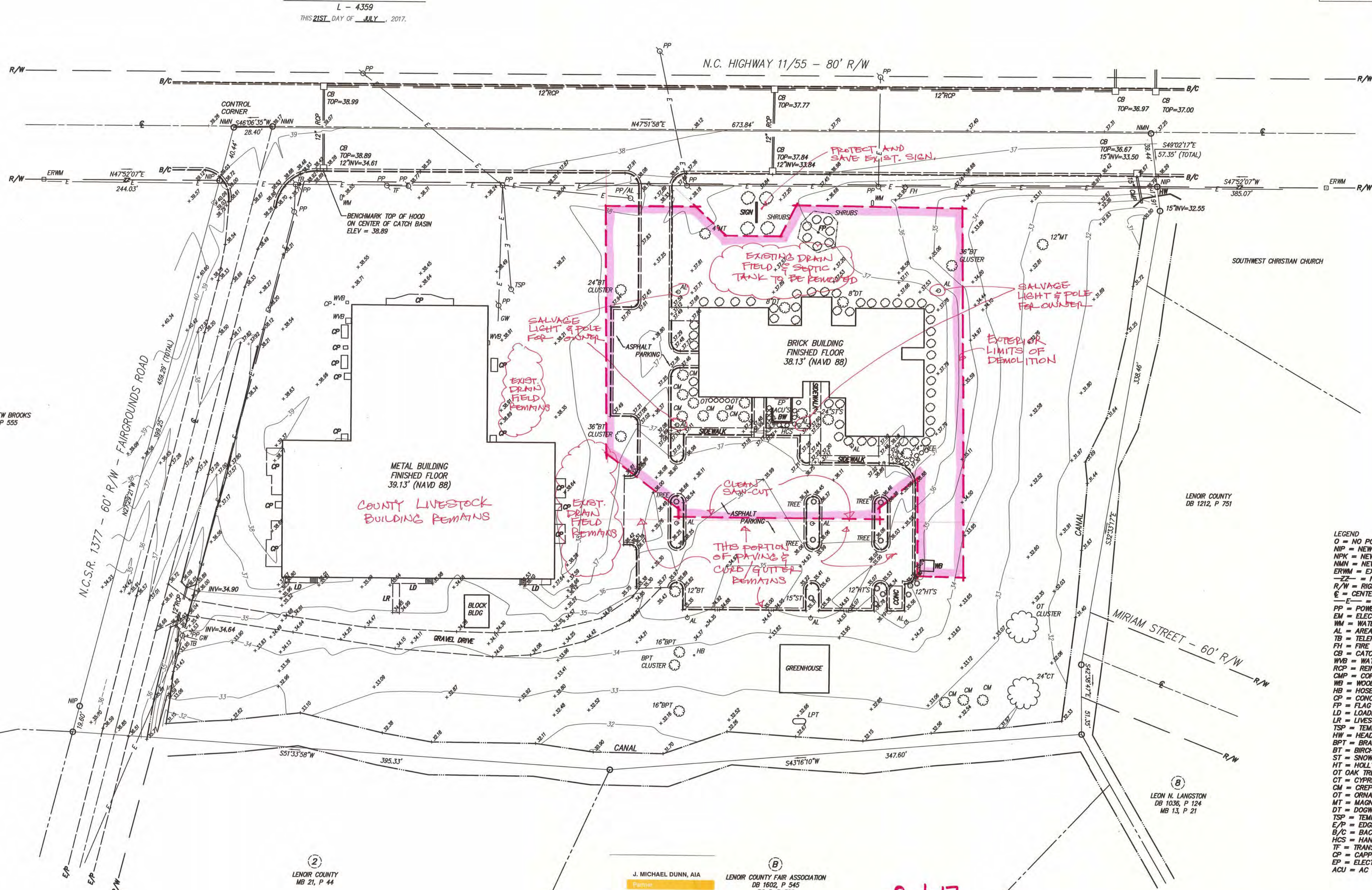
ISSUE DATE: 7-21-17

CHECKED BY: F.W.D.

DRAWN BY: W.C.B., JR.

LENOIR COUNTY AG CENTER
 & LIVESTOCK BUILDING
 PROJECT NO.
 17035

Atlantic Surveying, P.A.
 FIRM LICENSE NO. C - 1412
 111 S. QUEEN STREET
 KINSTON, N.C. 28501
 PHONE: (252) 527-6994
 FAX: (252) 522-0199



- LEGEND
- O = NO POINT SET
 - NIP = NEW IRON PIPE
 - NPK = NEW PK NAIL
 - NMN = NEW MAG NAIL
 - ERWM = EXISTING R/W MONUMENT
 - Z- = NOT TO SCALE
 - R/W = RIGHT OF WAY
 - E = CENTERLINE
 - E- = OVERHEAD ELECTRICAL
 - PP = POWER POLE
 - EM = ELECTRICAL METER
 - WM = WATER METER
 - AL = AREA LIGHT
 - TB = TELEPHONE BOX
 - FH = FIRE HYDRANT
 - CB = CATCH BASIN
 - WVB = WATER VALVE BOX
 - RCP = REINFORCED CONCRETE PIPE
 - CMP = CORRUGATED METAL PIPE
 - WB = WOOD BUILDING
 - HB = HOSE BIB
 - CP = CONCRETE PAD
 - FP = FLAG POLE
 - LD = LOADING DOCK
 - LR = LIVESTOCK RAMP
 - TSP = TEMP SERVICE POLE
 - HW = HEADWALL
 - BPT = BRADFORD PEAR TREE
 - BT = BIRCH TREE
 - ST = SNOWBALL TREE
 - HT = HOLLY TREE
 - OT = OAK TREE
 - CT = CYPRESS TREE
 - CM = CREPE MYRTLE
 - OT = ORNAMENTAL TREE
 - MT = MAGNOLIA TREE
 - DT = DOGWOOD TREE
 - TSP = TEMP SERVICE POLE
 - E/P = EDGE OF PAVEMENT
 - B/C = BACK OF CURB
 - HCS = HANDI CAP SIGN
 - TF = TRANSFORMER
 - CP = CAPPED PIPE
 - EP = ELECTRICAL PANELS
 - ACU = AC UNITS

J. MICHAEL DUNN, AIA
 FIRM
DUNN & DALTON
 ARCHITECTS
 401 North Heritage Street
 Kinston, North Carolina 28501
 Phone: 252-527-1523
 Mobile: 252-933-5504
 Email: michael@dunnanddalton.com

8.1.17
DEMOLITION PLAN
NC COOPERATIVE EXTENSION
 (NOTES IN RED PROVIDED BY
 DUNN & DALTON ARCHITECTS)

THIS DOCUMENT ORIGINALLY ISSUED AND SEALED BY
 WILLIAM C. BUTLER, JR. L - 4359 ON 7-21-17
 THIS MEDIA SHALL NOT BE CONSIDERED A CERTIFIED
 DOCUMENT.

EXISTING SITE CONDITIONS

1" = 40'-0"

ROBERT ANDREW BROOKS
 DB 1706, P. 555

LENOIR COUNTY
 MB 21, P. 44

LENOIR COUNTY
 MB 21, P. 44

ACREAGE DATA
 7.45 AC ±
 EXCL. R/W
 BY COMPUTER

SOURCE OF TITLE
 DB 728, P. 609
 MB 21, P. 44